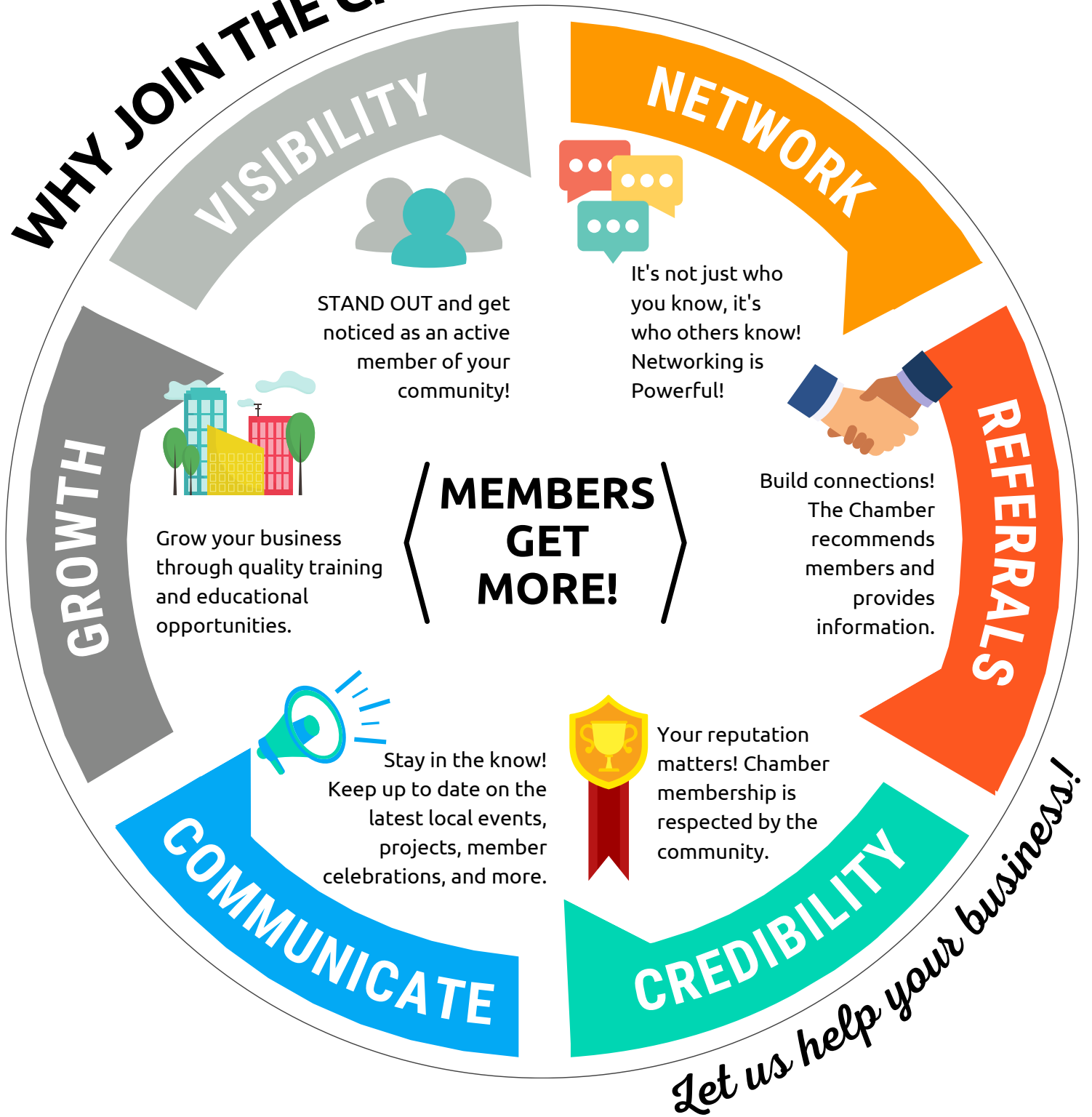


WHY JOIN THE CHAMBER?





Membership Investment Levels

		Supporter	Business Builder	Influencer	Community Connector	Business Innovator	Platinum Partner	Presidential
		\$250	\$500	\$750	\$1,000	\$1,500	\$3,000	\$5,000
Maximum Exposure	Company marketing materials at all Chamber events							
	Special Membership Plaque for your Business Office/Lobby							
	Two-minute spotlight at specialty Chamber events							
	Sponsor Membership for a Non-Profit for a Year							
	Company Logo on Chamber Correspondence & Chamber Letterhead							
	Company Logo w/Website Link featured on Chamber Website							
	Priority Seating & Recognition Chamber Events							
Reach	Business Spotlight in Chamber Newsletter							
	Business Logo Featured in Chamber Office							
	Logo Recognition in Chamber Newsletter							
	Logo in Printed Directory							
	Recognition at Annual Dinner							
Expand Your Network	Tickets to VIP Chamber Luncheon & Tour				2	4	Table	Table
	Women's Celebration Luncheon Tickets			1	2	4	6	8
	Annual Membership Dinner and Awards Tickets			2	3	4	Table	Table
	Spotlight Video or Company Write Up on Facebook							
	Business After Hours (Upon Request)							
	Member2Member Email (Upon Request)			1	2	3	4	6
Get the Word Out	Heartland Business Connect - Annual Membership							
	Business Cards & Items Located in Chamber Offices							
	Membership Mailing Labels for Marketing							
	Vendor Booth: Women's Celebration Luncheon or Senior EXPO							
	Business Logo on Online Membership Directory							
	Tickets for Chamber Luncheons or Breakfast Meetings	2	6	9	12	15	25	40
Visibility	Post Events & Job Openings on Chamber Website							
	Share Events & Announcements in Chamber Newsletter & Social Media	1/month	1/month	2/month	2/month	2/month	2/month	2/month
	Chamber Member Decal & Use of Chamber Logo in Promotions							
	Chamber Assisted Ribbon Cutting or Welcome Celebration							
	Opportunity to be Included on S.E.E. Carroll County Gift Card							
	New Member Recognition on Chamber Website, Social Media &							
	Advertising and Sponsorship Opportunities							
	Online Membership Directory with Link to Webpage & Social Media							
Advocacy	Opportunities to Provide Input on Legislative Issues							
	Opportunities to Join Committees or Become an Ambassador							
Networking & Resources	Member Discounts to Luncheons, Breakfasts, Trainings & Special Events							
	Leads and Referrals							
	Notary Services, Certificate of Origin, Constant Contact Discount							
	Meeting Space Available (Upon Request)							
	Bi-Monthly Chamber Newsletter Subscription (Unlimited)							

www.CarrollCountyChamber.com

Phone: 765.564.6757
 Calin Smith, Office Manager
 Madison Kauffman, Executive Director

110 E. Franklin St., Delphi

4 E. Main St., Flora
Connect@CarrollCountyChamber.com
Director@CarrollCountyChamber.com

Membership Application

Name of Company/Organization _____

Primary Contact _____ Title _____

Street Address _____ Mailing Address _____

City _____ State _____ Zip _____ Phone _____

Email Address _____

Website _____ Number of Employees _____

Social Media Sites _____

Business Description

Please include a brief description of your business services and/or products. This will appear on your website listing. Hours of operation may be included.

Investment Level	Price	Choice
Presidential	\$ 5,000	
Platinum Partner	\$ 3,000	
Business Innovator	\$ 1,500	
Community Connector	\$ 1,000	
Business Builder	\$ 500	
Supporter	\$ 250	
Non-Profit	25% Discount	
TOTAL:		

Method of Payment		
<input type="checkbox"/>	Check	<input type="checkbox"/>
<input type="checkbox"/>	Cash	<input type="checkbox"/>
<input type="checkbox"/>	Credit Card	
For credit card payment, please call the Chamber (765)564-6757		

Mail to: Carroll County Chamber of Commerce P.O. Box 175 Delphi, IN 46923
Deliver to: 110 E. Franklin St., Delphi or 4 E. Main St., Flora

I will offer a Member-to-Member Discount _____

Additional Representatives

Your Chamber membership extends to every member of your staff. While you are busy running your business, members of your staff can attend Chamber functions and bring the knowledge and contacts they gain back to you. To ensure that your staff is aware of Chamber happenings, you may add key representatives to our mailing list.

Representative _____ Title _____

Email Address _____ Phone _____

Representative _____ Title _____

Email Address _____ Phone _____

Representative _____ Title _____

Email Address _____ Phone _____

Why are you joining the Chamber?

- Involvement: get better connected by participating in programs and events
- Advocacy: get problems solved by updates on legislative issues that affect your business
- Education: get in the know by continuing educational opportunities
- Marketing: get more visibility by promoting your business with sponsorships/advertising
- Communication: stay informed about local businesses and community events and issues
- Credibility: membership offers credibility to your business through chamber affiliation
- Other: _____

Thank You!

